



6874-1000

- To check the accuracy of table movements of machine tools and calibrate CMM
- Horizontal use and vertical use
- Constructed with ceramic gage blocks
- Optional accessory: stand

Code	Size	Step	A	B
6874-300*	0-300mm	10mm	320mm	345mm
6874-450*	0-450mm	10mm	470mm	495mm
6874-600*	0-600mm	10mm	620mm	645mm
6874-1000*	0-1000mm	10mm	1020mm	1045mm

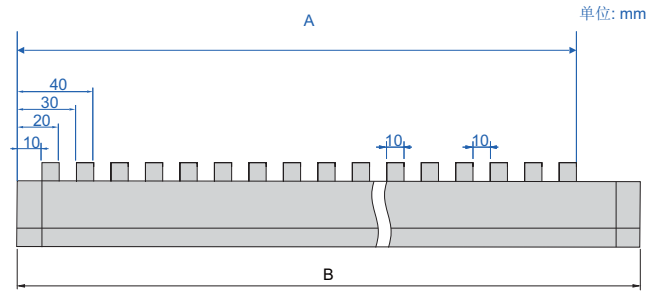
* Supplied with ISO17025 calibration certificate of Shenzhen Institute of Metrology & Quality Inspection (SMQ)

Accuracy

Size(mm)	Accuracy	Work face size variation
≤100	±1.0μm	0.5μm
>100, ≤200	±1.1μm	0.5μm
>200, ≤300	±1.3μm	0.6μm
>300, ≤400	±1.6μm	0.7μm
>400, ≤500	±2.0μm	0.8μm
>500, ≤600	±2.5μm	1.0μm
>600, ≤800	±3.0μm	1.4μm
>800, ≤1000	±4.0μm	1.8μm

Stand(optional)

Code	Applicable check masters
6874-A	6874-300, 6874-450, 6874-600
6874-B	6874-1000



ISO17025 Calibration certificate



Stand(optional)