

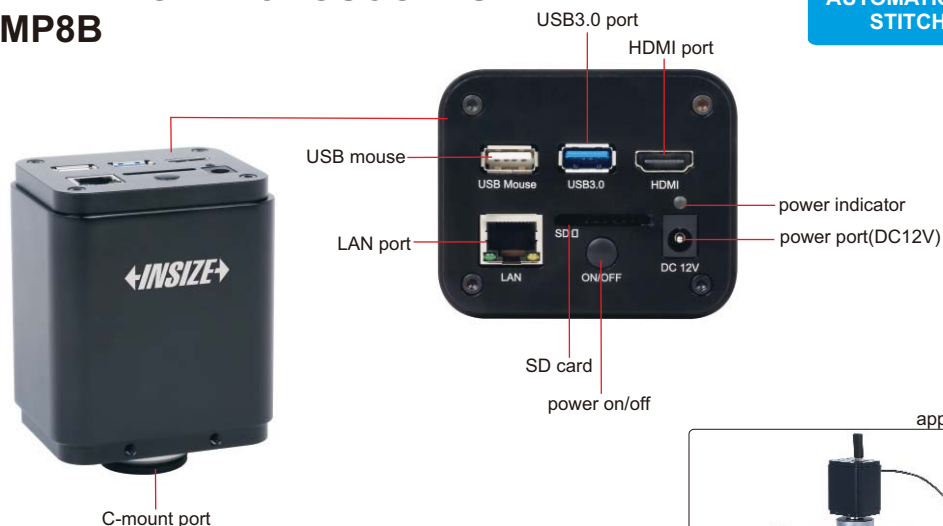
# WIFI 4K CAMERA FOR MICROSCOPES

## CODE ISM-MP8B

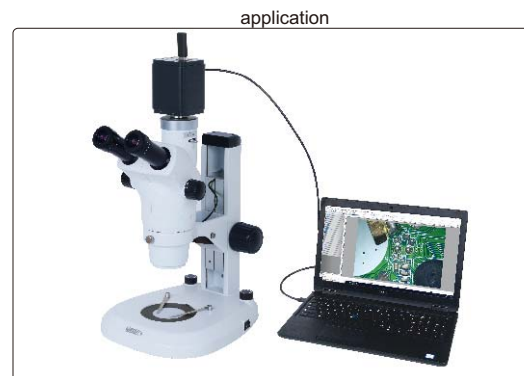
**AUTOMATIC IMAGE STITCHING**

**FOCUS STACKING**

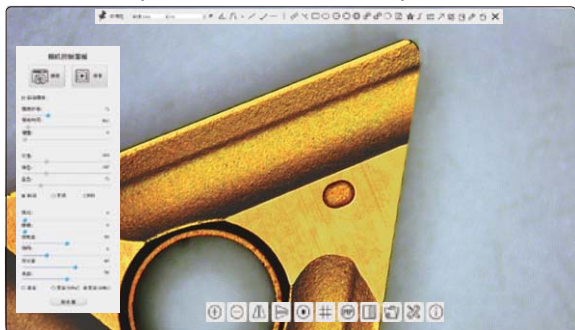
**WIRELESS AD-HOC NETWORK**



- 4K high-definition image
- Can be connected with displays or computers
- Built-in simple measuring software for display, without computer
- Professional measuring software for computers is included
- 4K HDMI/LAN/USB multiple video outputs
- 4K/1080P automatically switched by display resolution
- Focus stacking, automatic image stitching
- Wireless network or wired network



### SIMPLE MEASURING SOFTWARE (BUILT-IN, FOR DISPLAYS)



### PROFESSIONAL MEASURING SOFTWARE (INCLUDED, FOR COMPUTERS)



### SPECIFICATION

Sensor	1/1.2" CMOS
Pixel	8M
Resolution	3840×2160, 1920×1080
Single pixel	2.9×2.9μm
Frame Rate	60fps@3840×2160(HDMI) 30fps@3840×2160(LAN) 30fps@3840×2160(USB)
Binning	1×1
Exposure	0.04~2000ms
Output	HDMI / USB / LAN
Lens connection	C-mount
Power supply	DC 12V 1A
Dimension(L×W×H)	255×170×90mm
Weight	2kg

### CONNECTION

HDMI	Comply with HDMI2.0 standard
	4K/1080P automatically switched by display resolution
LAN	H264 encoded video
	Bandwidth adjustment in real time
	DHCP configuration or manual configuration Unicast/multicast configuration
WLAN	Connecting 5G WLAN adapter(USB3.0 interface) in AP/STA mode
USB3.0	Connecting USB3.0 port of PC for video transfer MJPEG format video

### STANDARD DELIVERY

Main unit	1 pc
16G SD card	1 pc
USB mouse	1 pc
HDMI2.0 cable	1 pc
USB3.0 cable	1 pc
USB wlan adapter	1 pc
Wlan cable	1 pc
Glass calibration ruler	1 pc
Calibration plate	1 pc
Software	1 pc
Power adapter	1 pc

### OPTIONAL ACCESSORY

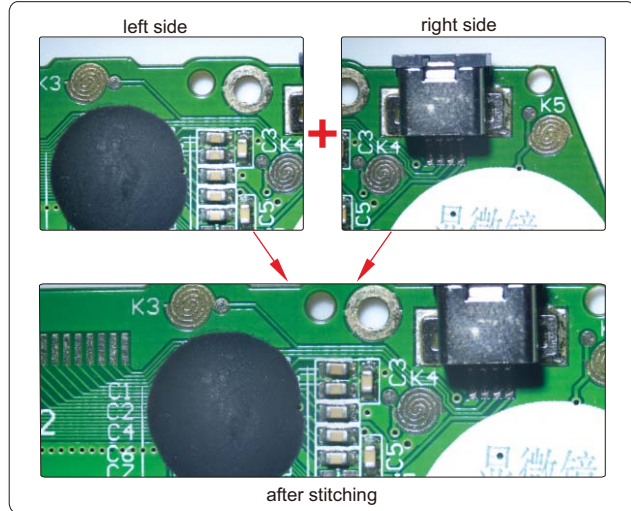
16G USB flash disk	IS-USBDISK-16G	
Adjustable lens adapter	Ø23.2mm eyepiece tube	ISM-MP-2A075
	Ø31.75mm eyepiece tube	ISM-MP-3A075
Fixed lens adapter	Ø23.2mm eyepiece tube	ISM-MP-2F075
	Ø31.75mm eyepiece tube	ISM-MP-3F075
Adapter ring for Ø30.0mm eyepiece tube	ISM-MP-300R	
Adapter ring for Ø30.5mm eyepiece tube	ISM-MP-305R	

### COMPUTER













Operation system	Windows/7/8/10
CPU	Intel Core 2 2.8Hz
Memory	2GB
USB port	USB3.0 or USB2.0 port
Display	17"

### PROFESSIONAL MEASURING SOFTWARE (INCLUDED, FOR COMPUTERS)

automatic image stitching(expand field of view)



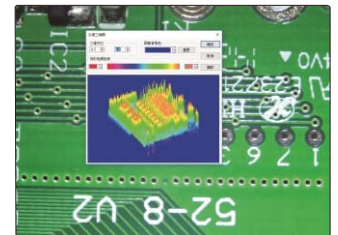
### Measuring tools:

-  measure length of line or distance between two points
-  measure distance between two parallel lines
-  measure rectangle
-  measure width and diameter of ring
-  measure angle
-  measure diameter, length, perimeter angle of arc
-  measure radius, girth and area of circle
-  measure area of polygon
-  measure axis lengths, girth and area of ellipse
-  measure center distance between two circles
-  calibration
-  measure length of open curve

focus stacking

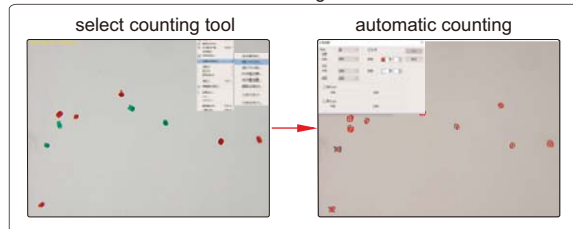


3D plot

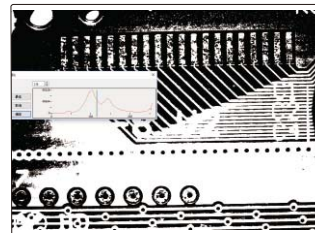


Visualize the distribution of image brightness and color

counting



Binary



separate target and background